

Small Scale Forest Owner Training Needs Survey

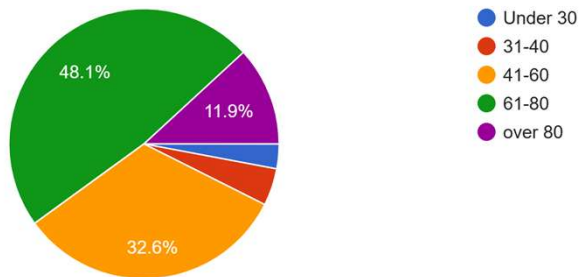
Carried out April to June 2023

Responses predominantly from members of NZFFA

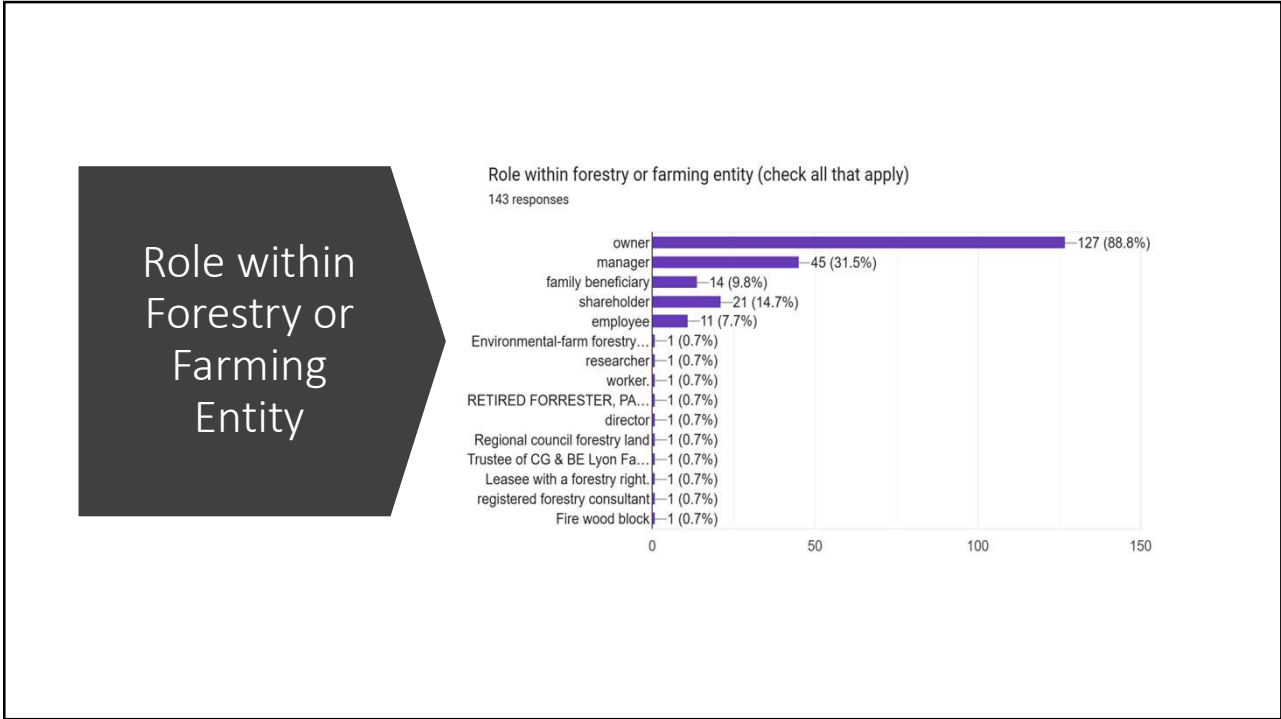
1

Age Range of Respondents

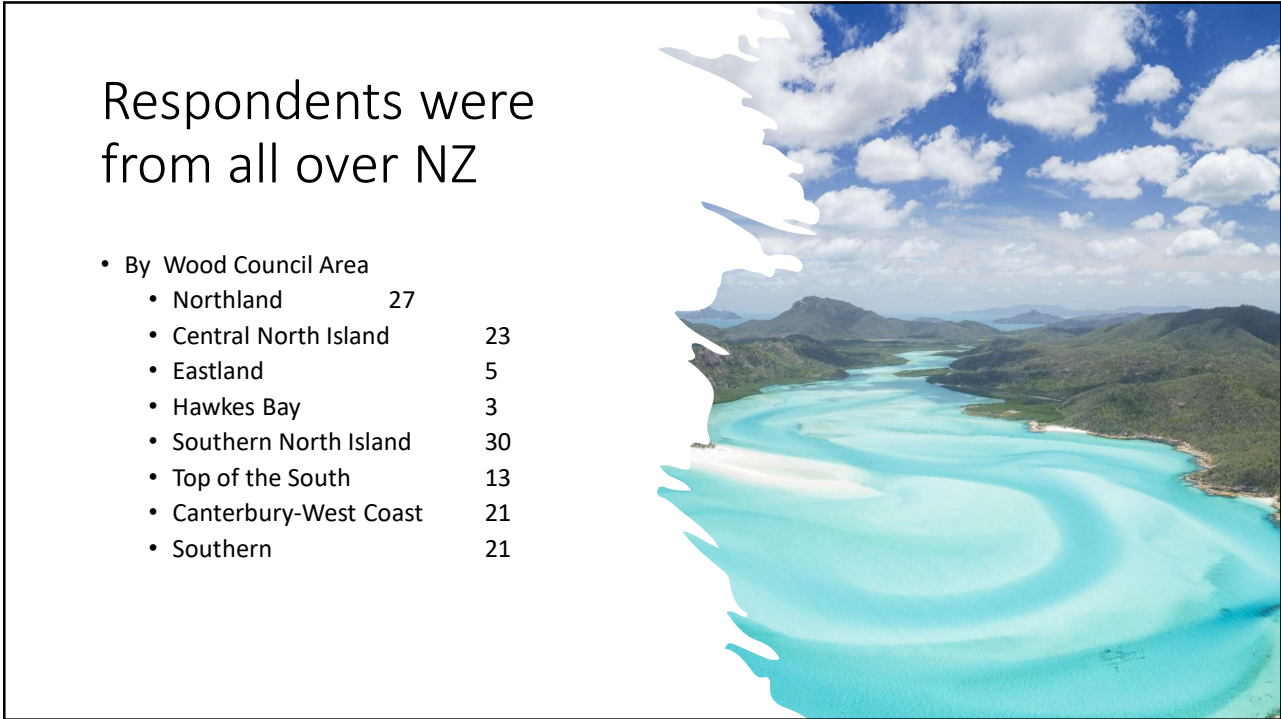
Age Range
135 responses



2

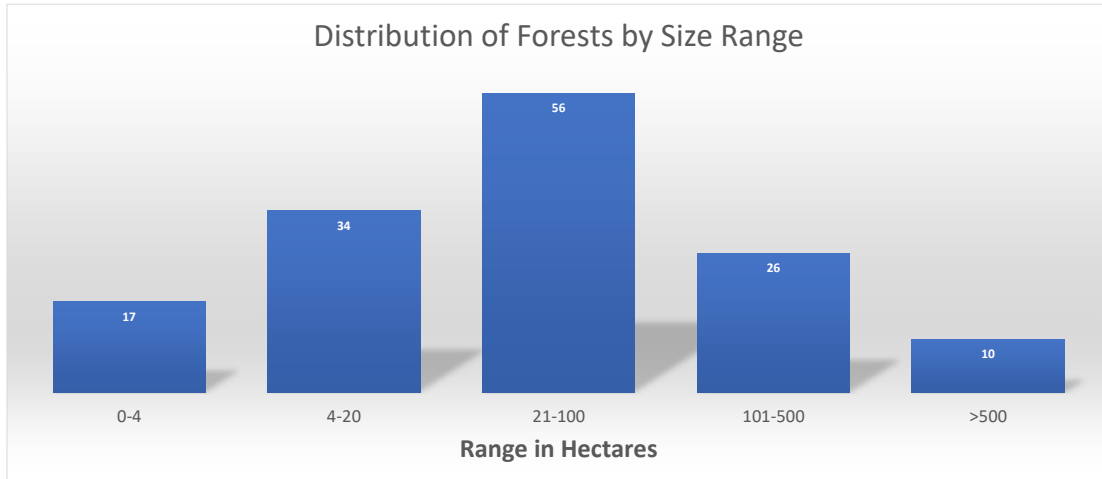


3



4

Area of Planted Forestry or Shelterbelts or Riparian planting Associated with Respondent

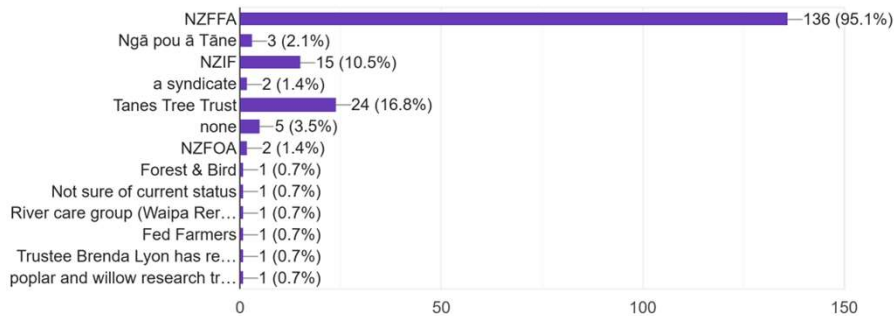


5

Affiliations to Organisations

Are you or your business affiliated to any of these organisations (check all that apply):

143 responses

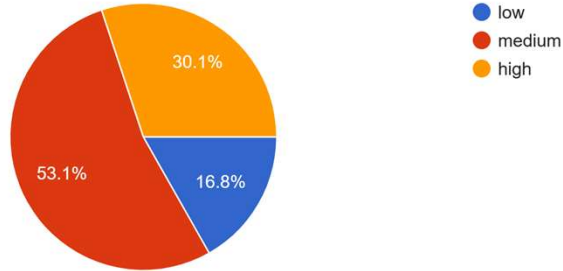


6

Self-Rated Experience and Knowledge

Rate your experience and knowledge in forestry?

143 responses

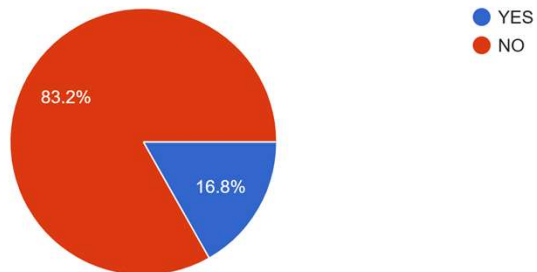


7

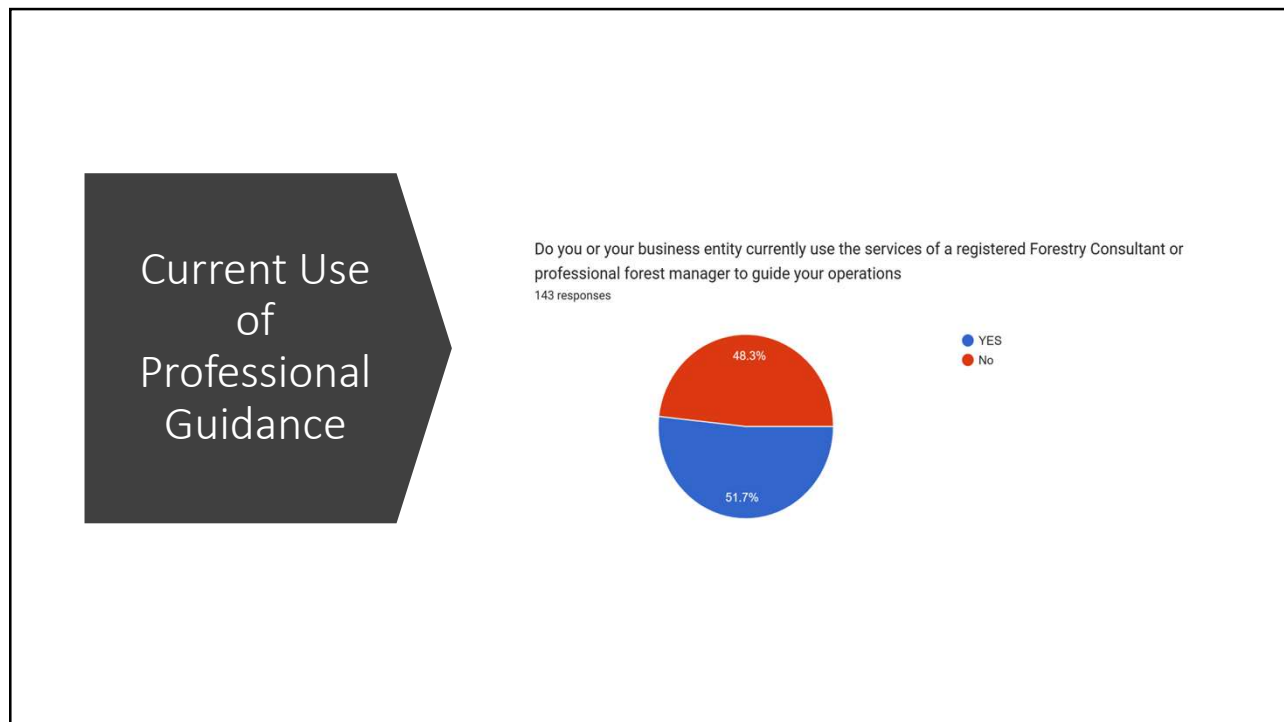
Formal Forestry Qualifications within Business

Do you or influential member of the business already have formal forestry qualifications?

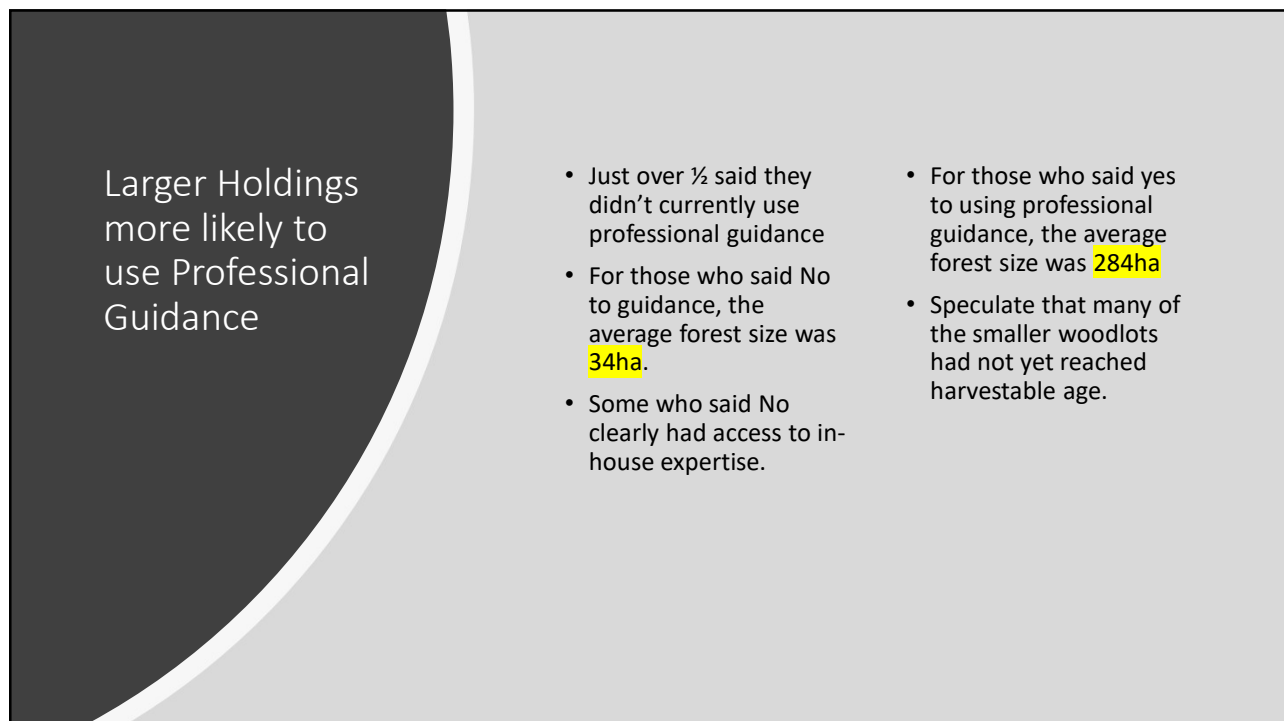
143 responses



8



9

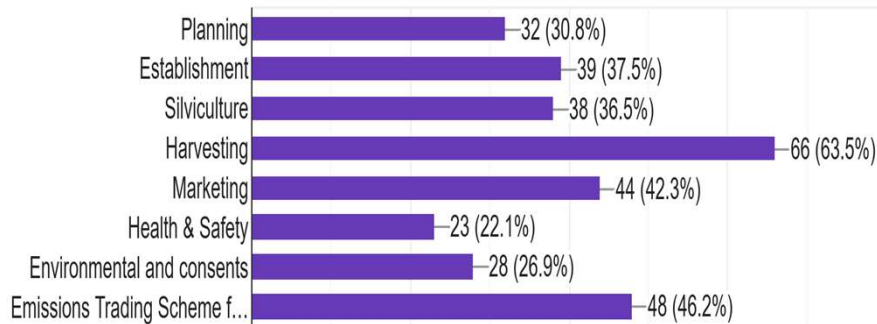


10

At What Stages is Professional Advice Sought

If YES, at what stages do you seek advice (check all that apply)?

104 responses



11

Current Sources of Information

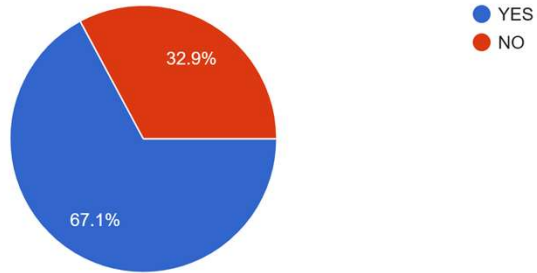
- Many and varied, perhaps those who were interested made more active efforts
- This group frequently relied on NZFFA connections, newsletters and Tree Grower magazine
- NZFOA and NZIF websites
- Consultancy Co. Newsletters
- Industry Newsletters & Websites
- Technical conferences and seminars
- Farming rural papers and general news media
- Government publications TUR_FS, EPA
- Discussions/interfaces with experts or likeminded people

12

Intentions to plant trees over next two years

Are you intending to plant trees in the next 12 or 24 months?

140 responses

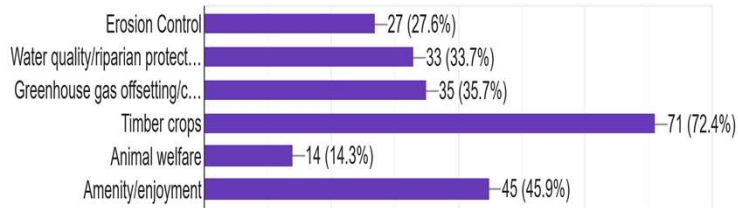


13

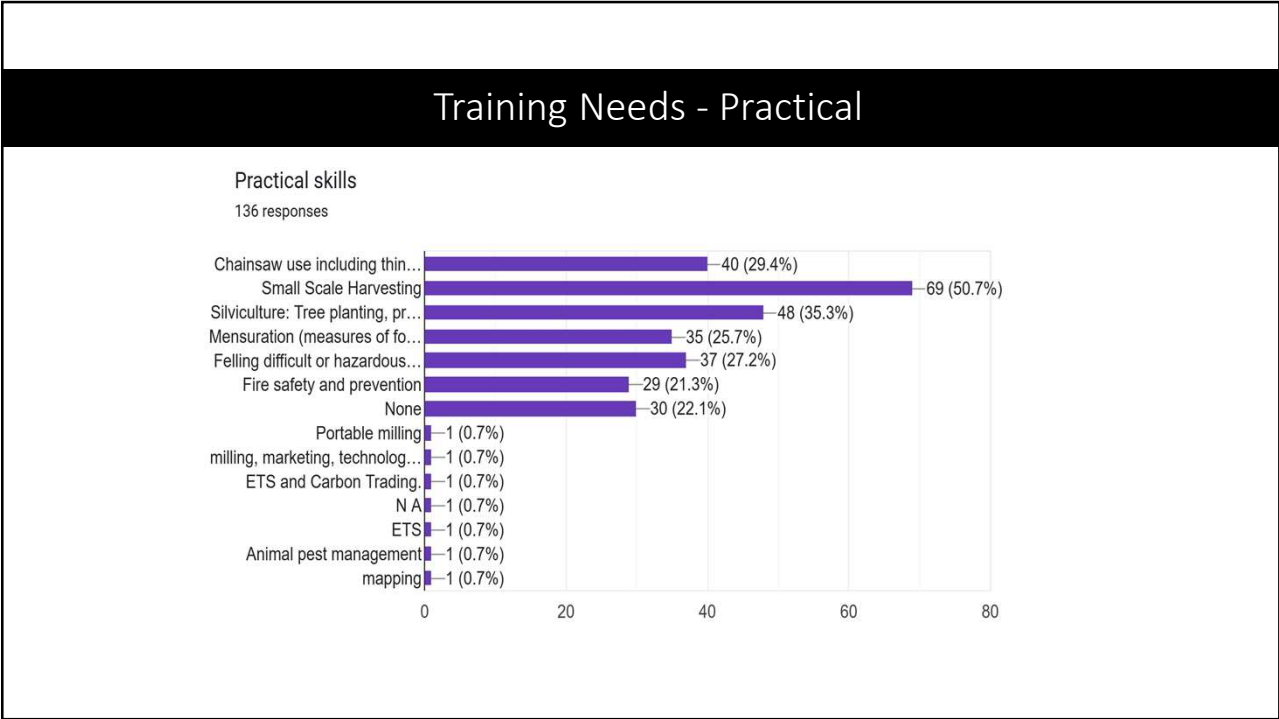
Reasons for Intended Planting

If yes, what are you mainly intending to plant for (check any relevant boxes)

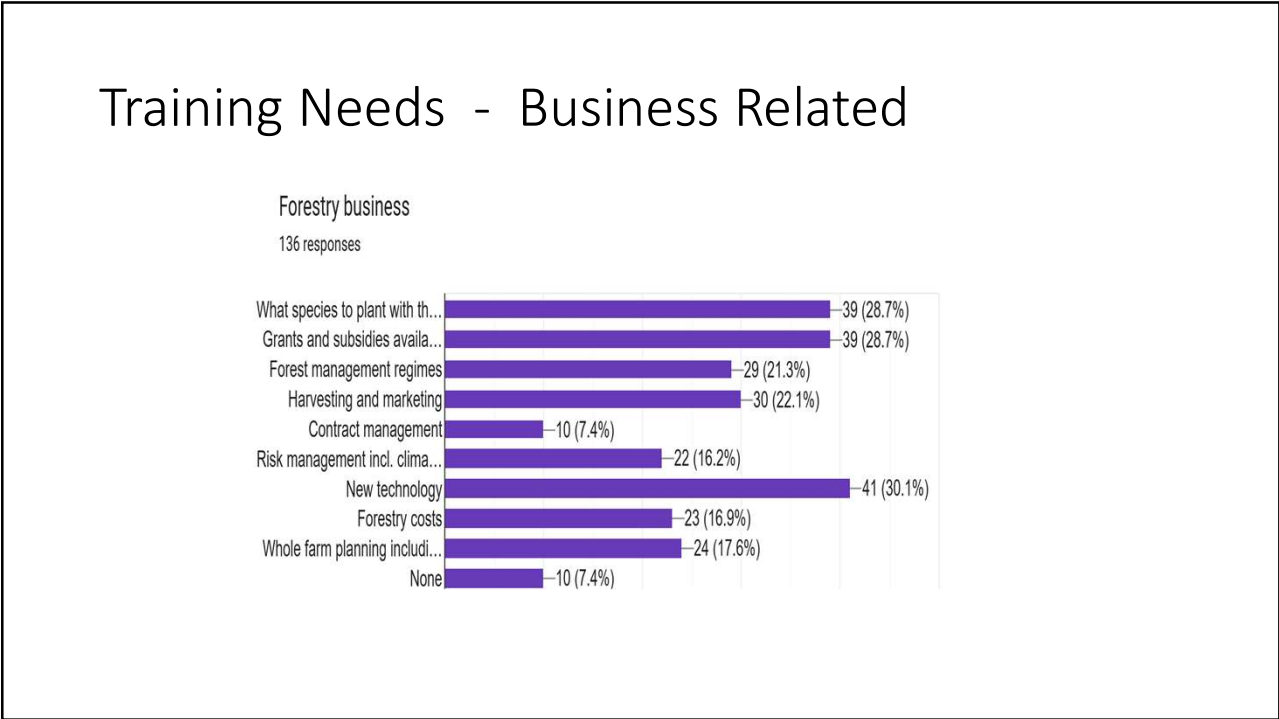
98 responses



14



15

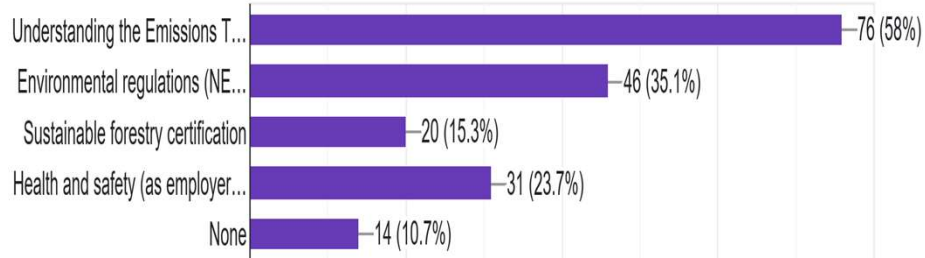


16

Training Needs - Regulations

Regulations

131 responses

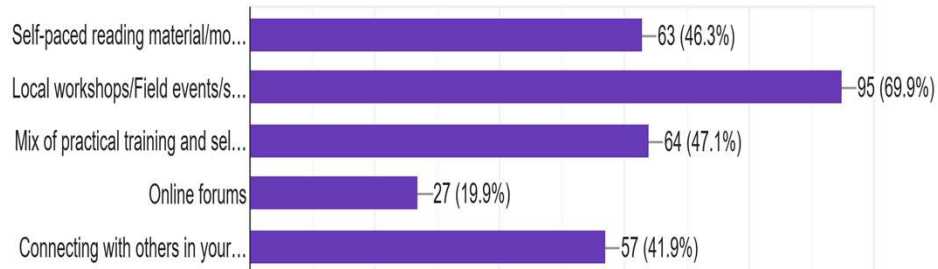


17

Preferred Way to Access Learning

Please check the options that would suit you.

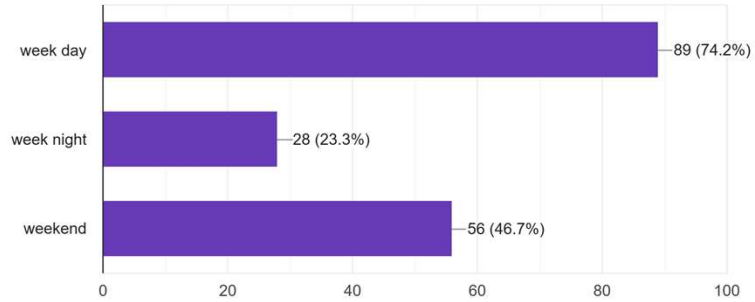
136 responses



18

What Days?

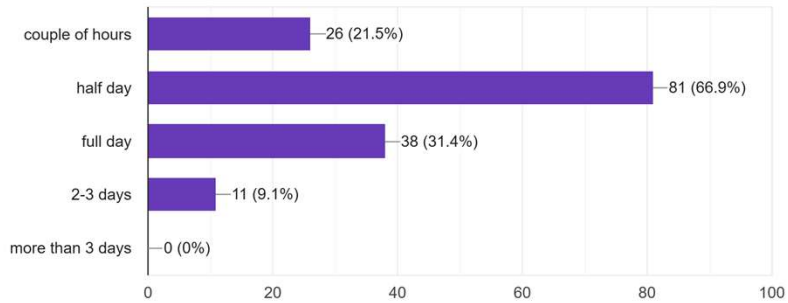
If you checked Local workshops/Field events/short practical course what days would suit?
120 responses



19

What Length of Time?

If you checked Local workshops/Field events/short practical course what length is preferred?
121 responses



20

Importance of Gaining a Qualification

Is it important that you get
127 responses

