

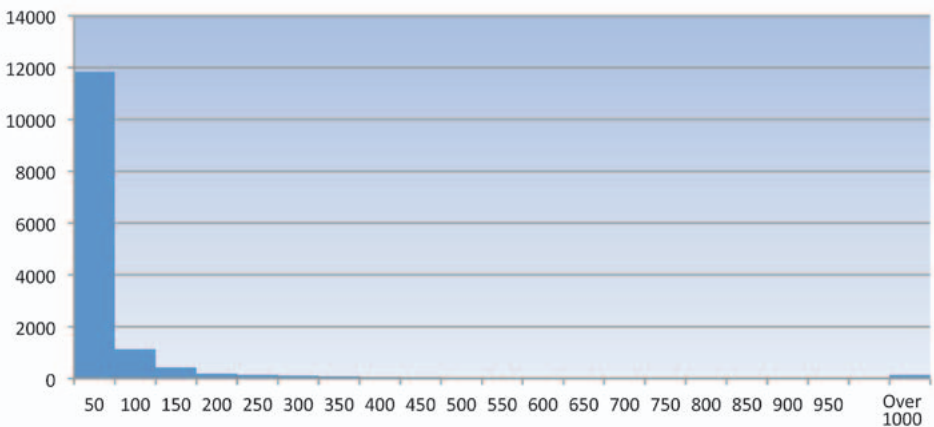


# The New Zealand Farm Forestry Association and the Forest Growers Commodity Levy

Forest growers pay a small industry levy on every tonne of timber harvested. The levy brings all growers into the industry loop, enabling them to participate fully in a more cohesive industry. Levy money contributes significantly towards a range of industry-good activities and enables information to be shared among all industry members.

New Zealand's forests are owned by a small number who own large forests owners and a large number who own small forests of under 1,000 hectares. The New Zealand Farm Forestry Association is the voice of the owners of small forest owners in levy matters. Because owners of small forests comprise the majority, they are important in the long-term success of the levy. Of the total estimated 14,300 forest owners in New Zealand, almost 13,000 or around 90 per cent, own forests which are smaller than 100 hectares.

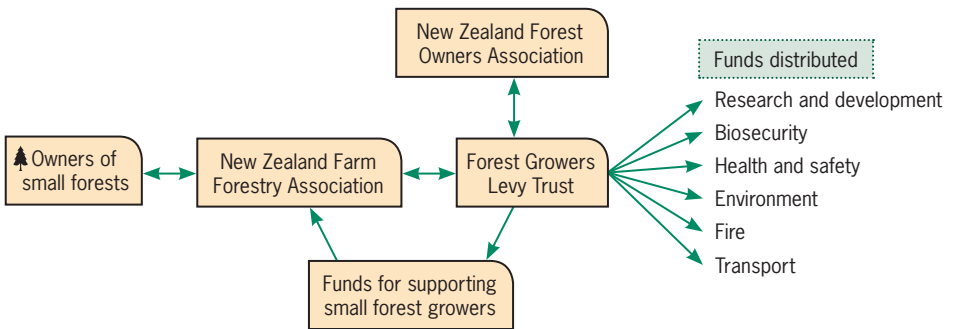
Number of owners



Forest area in hectares

The forest growers' commodity levy is administered by the Forest Growers Levy Trust which coordinates decisions on allocating levy funds. The NZ Forest Owners Association, which represents owners of large forest, provides the secretariat for the Forest Growers Levy Trust. In 2016, total levy income for the year was over \$9.7 million. Industry-good activities funded by the levy include research and development, health and safety and biosecurity.

The New Zealand Farm Forestry Association represents owners of small forests in levy negotiations. In return, it receives funds to communicate with owners of small forests about the levy.



Two members of the Forest Growers Levy Trust Board are elected by owners of small forests. Decisions on allocating funds are made by various committees reporting to the Trust, and members of the New Zealand Farm Forestry Association Executive represent owners of small forests on these committees.

The best way for owners of small forests to influence decisions about the levy is for them to join the New Zealand Farm Forestry Association and use their official representation.

