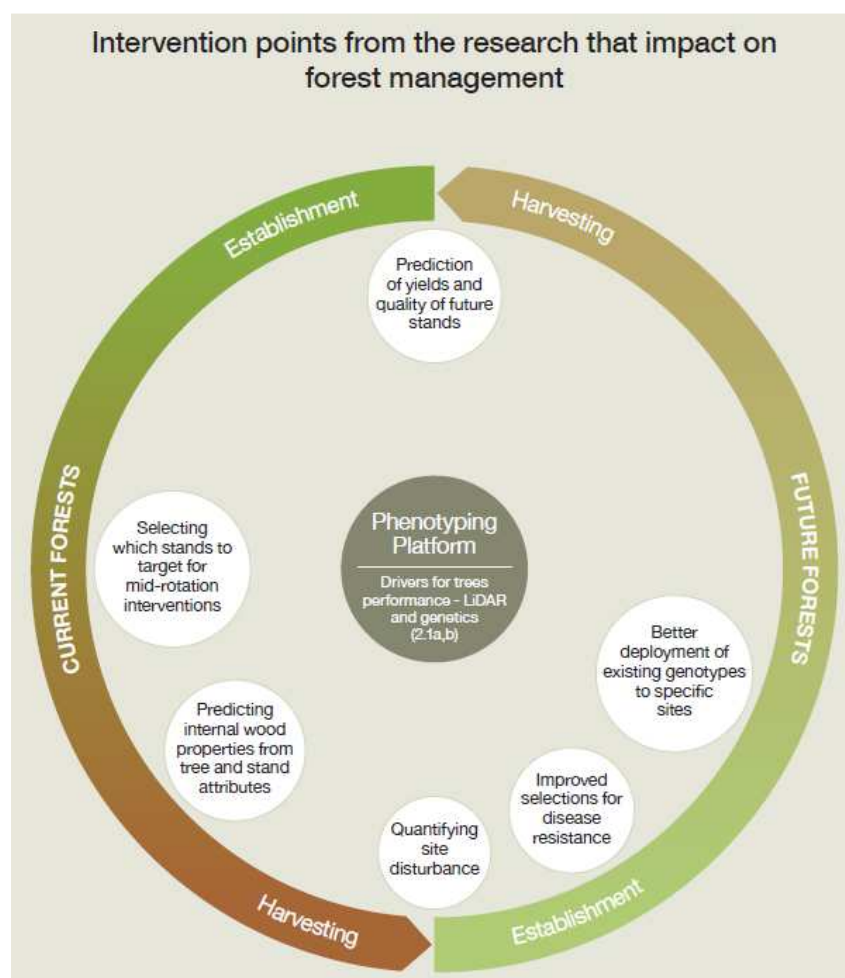


Introduction to the Forest Phenotyping Platform: Vision, design and process

Tuesday 11 October 2016
East Pier Hotel, 50 Nelson Quay, Napier

Introduction

The development of the forest phenotyping platform is one of the core elements of the GCFF programme and provides the information resource that forest managers, researchers and tree breeders can use to understand how the interaction of genetics, environment and management affect productivity and wood quality. Remote sensing research has enabled individual trees to be delineated from LiDAR images. This will be extended by including attributes about these individual trees, such as genetic origin, site characteristics and management history. With advances in sensor technology and computing power, very large numbers of trees can be assessed in order to better understand the drivers of productivity and wood quality.



Purpose of the workshop

This workshop will present progress to date on aspects of the phenotyping platform and the current vision. The workshop will be used to help to plan the first prototype of the phenotyping platform, due by mid-2017. The workshop aims to discuss how researchers believe the tool may be used, and seeks critical input to calibrate this view with the views of forest managers and growers.

We seek input on how growers and managers believe they might use the phenotyping platform, particularly to inform 'precision forestry or to identify outstanding trees in the forest to inform future deployment. The ultimate purpose of the workshop is to ensure our vision is one that will be useful to growers and their aspirations.

Agenda

1.00 – 1.30 pm	Coffee and registration	
Presentations 1.30 – 3.00	Introduction and background to the forest phenotyping platform	P Clinton, J Dash, H Dungey
	The vision and the end product - what it will look like and what can we do with it?	J Dash, H Dungey
	Industry perspectives on the use of the forest phenotyping platform - View of a large forest owner	TBC
	Industry perspectives on the use of the forest phenotyping platform - View of a small forest owner	TBC
3 – 3.30 pm	Afternoon Tea	
Workshop session 3.30 – 4.30 pm	What is your vision? Use and Design	
4.30 - 4.45 pm	Summing up	P Clinton

Registration

This is a free workshop for industry and other stakeholders.
To register please email Annette Brockerhoff (Annette.brockerhoff@scionresearch.com).